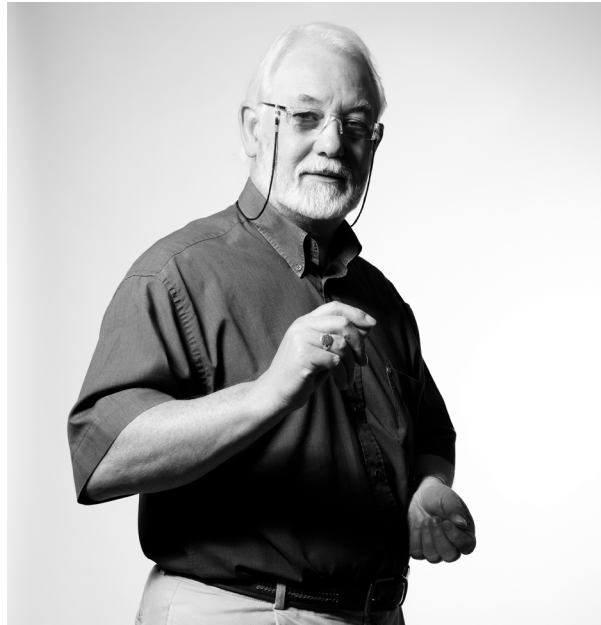




CI 700 Series

If you love the idea of enjoying a true cinema sound experience in your home, but don't have a cinema-proportioned room to match, Custom Installation 700 Series speakers are the answer. While they match the power and dynamics of our Custom Theatre 700 Series home theatre speakers, this range has a compact design that makes it easy to slot them into tight spaces without any loss of sound quality. Used on their own, or as part of a set-up including CT700 Series speakers, and you have all the ingredients you need for a stunning acoustic experience, whether you're watching movies or listening to music.



“To capture the dynamic range of cinema sound, speakers have to perform all sorts of difficult tasks. Those tasks are made even more challenging when speakers are built into walls. For this range, we've come up with a number of improvements to the ways speakers are fitted into the home environment – including rigid back boxes that create more volume around the speaker while giving more stability and control. We think they're the best-sounding installation speakers we've ever produced.” Dr. John Dibb, Senior Development Engineer

Design

To guarantee a great sound, all speakers need stability and a fixed volume of space. It's the reason why we invest so much time on the cabinet construction of our speakers. That's all very well for free-standing models – but what speakers built into brick and plasterboard? For the CI 700 Series, we've introduced some brand new innovations that ensure the most fully-formed sound, even from the tightest spaces.

Reservoir box

CI 700 Series speakers can be retrofitted into existing ceilings and walls (as long as they are hollow) so there's no extra construction necessary. Retrofitting speakers can cause a reduction in volume around the speaker – so to compensate for this we've created a hinged reservoir box that can be attached to either side of the back box in order to increase the internal volume. You'll be guaranteed a full, vibrant sound, no matter how restricted your space.



Full control

With most custom-fitted speakers, the way sound travels can be unpredictable. The problem is in the walls themselves. Without a conventional cabinet, there's no way of knowing how much air is behind the drivers, and how much sound will bleed through walls and even into other rooms. CI 700 Series speakers solve the problem with an integrated back box. By encasing the back of the drive units in a rigid cabinet and carefully defining the volume of air around them, we've taken back control of how the speaker sounds. Add in our Flowport™ venting system to our wall models, and you have a speaker range with the lungs to match many of our traditional models.

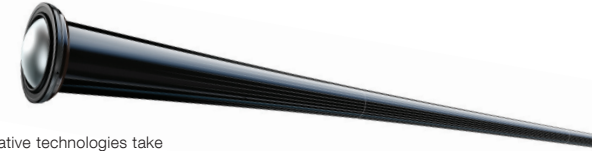
Sound

Look behind the grille of every one of our Custom Installation speakers, and you'll find advanced Bowers & Wilkins acoustic technology that is the product of nearly 50 years of intensive research and development. Our innovations can be found anywhere great sound quality matters: in recording studios, in concert halls, and now tucked discreetly into the walls of your house as part of your own Custom Installation system.

As well as incorporating Bowers & Wilkins technology you'll recognize from our very best traditional models, the CI 700 Series also features many innovations specially designed for the range. The baffles, for example, are formed from a single glass-fibre reinforced ABS moulding, for incredible strength and rigidity. And the ceiling models feature a scallop-shaped indentation close to the tweeter, for optimum sound dispersion at high frequencies.



This range of custom-fitted speakers shares many technologies with the mighty Custom Theatre 700 Series, making it easy to create a home theatre set-up that mixes and matches speakers from both ranges.



Tweeter

Some of our most innovative technologies take their inspiration from nature. For the body of our Nautilus™ speaker, for example, we created a spiralling, conch-like form that drains away all excess sound from the rear of the driver, rather than letting it bounce noisily around the cabinet. The result? Almost zero coloration from the back of the speaker, and a much purer sound from the front. The Nautilus™ tube-loaded tweeter has been a feature of the CT700 Series since the beginning. And now you'll also find this high performance technology in CI 700 Series.



FST™

The FST midrange driver has a ring of foam whose mechanical properties exactly match those of the woven Kevlar® cone. With a conventional roll surround these energies would be reflected back into the cone and smudge the sound. The FST soaks them up, like a circular shock absorber around the cones edge. This allows the cone to be more responsive and to move more freely creating an unbeatable midrange.

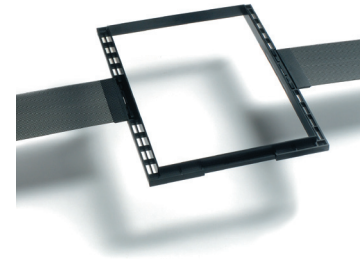


Flowport™

For great bass, you need a regulated supply of air. That's where our Flowport venting system comes in. The surface of the Flowport is covered in tiny dimples, which act like the dimples on a golf ball to reduce air friction. Air passes in and out of the speaker as smoothly and soundlessly as possible.

Specifications

		Nautilus™ tweeter	Kevlar® cone	FST™ Midrange	Flowport™	Rotating MF/HF module	Integrated back box	Pte-mount Kit
CCM7.3	Tube	■	■	-	-	■	PMK 7C	
CCM7.4	Tube	■	-	-	-	■	PMK 7C	
CCM7.5	Tube	■	-	-	-	■	PMK 7C	
CWM7.3	Tube	■	■	■	■	■	PMK 7.3W	
CWM7.4	Tube	■	-	■	-	■	PMK 7.4W	
CWM7.5	Tube	■	-	■	-	■	PMK 7.5W	



Pre-mount kit
Used in new drywall construction, the PMK identifies the position of the speaker during construction and provides a guide for cutting plasterboard.

CI 700 Series In-ceiling

	CCM7.3	CCM7.4	CCM7.5
Description	3-way in-ceiling system	2-way in-ceiling system	2-way in-ceiling system
Drive Units	1x ø25mm (1in) Nautilus™ tube loaded soft dome tweeter 1x ø100mm (4in) blue Kevlar® cone FST™ midrange 2x ø130mm (5in) paper/Kevlar® cone bass drivers	1x ø25mm (1in) Nautilus™ tube loaded soft dome tweeter 2x ø130mm (5in) blue Kevlar® cone bass/midrange	1x ø25mm (1in) Nautilus™ tube loaded soft dome tweeter 1x ø150mm (6in) blue Kevlar® cone bass/midrange
Frequency Range (-6dB)	49Hz – 28kHz	52Hz – 28kHz	54Hz – 28kHz
Recommended Amp Power	25 – 200w	25 – 150w	25 – 150w
Sensitivity SPL (2.83V, 1m)	90 dB	88.5 dB	88 dB
Impedance Nominal (min)	6Ω (3.5Ω)	8Ω (6.5Ω)	8Ω (6.5Ω)
Frame height	355mm (14in)	355mm (14in)	355mm (14in)
Frame width	355mm (14in)	355mm (14in)	355mm (14in)
Cut-out height	332mm (13.1in)	332mm (13.1in)	332mm (13.1in)
Cut-out width	332mm (13.1in)	332mm (13.1in)	332mm (13.1in)
Depth behind surface	194.5mm (7.66in)	194.5mm (7.66in)	194.5mm (7.66in)
Protrusion	6.5mm (0.25in)	6.5mm (0.25in)	6.5mm (0.25in)

CI 700 Series In-wall

	CWM7.3	CWM7.4	CWM7.5
Description	3-way in-wall system	2-way in-wall system	2-way in-wall system
Drive units	1x ø25mm (1in) Nautilus™ tube loaded soft dome tweeter 1x ø100mm (4in) blue Kevlar® cone FST™ midrange 2x ø150mm (6in) paper/Kevlar® cone bass drivers	1x ø25mm (1in) Nautilus™ tube loaded soft dome tweeter 1x ø150mm (6in) blue Kevlar® cone bass/midrange	1x ø25mm (1in) Nautilus™ tube loaded soft dome tweeter 1x ø130mm (5in) blue Kevlar® cone bass/midrange
Frequency Range (-6dB)	43Hz – 28kHz	47Hz – 28kHz	49Hz – 28kHz
Recommended Amp Power	25 – 200w	25 – 150w	25 – 150w
Sensitivity SPL (2.83V, 1m)	90dB	89dB	86dB
Impedance Nominal (min)	4Ω (3Ω)	6Ω (5Ω)	6Ω (5Ω)
Frame height	736mm (29in)	415mm (16.5in)	356mm (14in)
Frame width	276mm (11in)	251mm (10in)	212mm (8.5in)
Cut-out height	711mm (28in)	390mm (15.4in)	331mm (13in)
Cut-out width	251mm (9.9in)	226mm (8.9in)	187mm (7.4in)
Reservoir box height	460mm (18.1in)	460mm (18.1in)	385mm (15.2in)
Reservoir box width	220mm (8.7in)	220mm (8.7in)	181mm (7.1in)
Reservoir box depth	60mm (2.4in)	60mm (2.4in)	60mm (2.4in)
Depth behind surface	102mm (4in)	102mm (4in)	102mm (4in)
Protrusion	6.5mm (0.25in)	6.5mm (0.25in)	6.5mm (0.25in)



Bowers & Wilkins

www.bowers-wilkins.com

Nautilus, Flowport and FST are trademarks of B&W Group Ltd.
Kevlar is a registered trademark of DuPont.
Copyright © B&W Group Ltd. E&OE
Designed in the UK.

