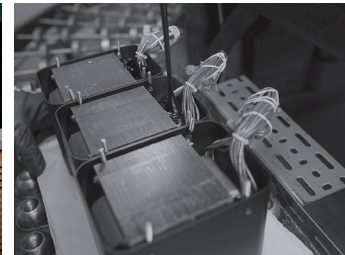


MT5 precision turntable

- MT5 is a complete turntable package that is more than the sum of its parts. Engineered to exacting McIntosh standards, each piece contributes to its superb performance.
- MT5 is factory adjusted for perfect playback. Tracking force, anti-skate force, cartridge overhang and arm height are all preset for maximum performance.
- While the construction of the MT5 is meticulous, the setup is simple. In a few easy steps, you'll be ready to enjoy your favorite vinyl recordings.
- While maintaining complementary McIntosh styling, the MT5 takes full advantage of the chassis materials used to suppress noise, resonance and coloration so the only sound produced is that which is contained on your records.
- Includes a clear, form-fitting dust cover to protect moving parts and your records.



A Modern Classic

McIntosh®

LEGENDARY PERFORMANCE®

www.mcintoshlabs.com

MT5 precision turntable

Drive Unit:

Decoupled DC motor with low noise bearings

Bearing:

Magnetic suspended ceramic

Playback Speeds:

33-1/3, 45 and 78 RPM

Tonearm:

Friction free with magnetic bearing technology, 9" (228.6mm)

Platter:

CNC machined, self-dampened, Silicone Acrylic, softly backlit in McIntosh green, 5 lbs (2.3kg)

Speed Stability:

+/- 0.04%

Cartridge:

Sumiko Amethyst Moving Magnet

Overall Dimensions (W x H x D):

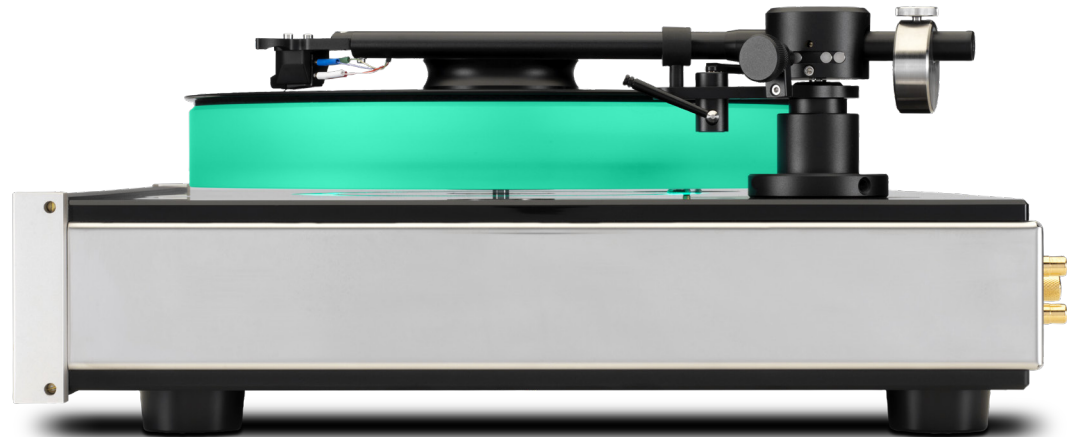
17-1/2" (44.5cm) x 7" (17.8cm) (7-1/2" (19.0cm) with dust cover) x 19" (48.26cm)

Weight:

31.5 lbs (14.3kg) net, 38 lbs (17.2Kg) in shipping carton

For the Consumer's Protection:

In order to ensure the highest level of customer satisfaction, new McIntosh products may only be purchased from an Authorized McIntosh Dealer; and, with certain limited exceptions may only be purchased over-the-counter or delivered and installed by the Authorized McIntosh Dealer. McIntosh does not warrant, in any way, products that are purchased from anyone who is not an Authorized McIntosh Dealer, or that have had their serial numbers altered or defaced.

**Companion Products**

The MP1100 or MP100 Phono Preamp, MC462 or MC275 Power Amplifiers, C2700 Vacuum Tube Preamp, MA252 Integrated Amp, and XR100 Loudspeakers are logical companions for the MT5 Precision Turntable. Your authorized dealer can provide additional information.

To learn more, please call us at 1.800.538.6576.

McIntosh®

LEGENDARY PERFORMANCE®

www.mcintoshlabs.com