

Specially designed for custom integration of whole home audio systems, the “AMP” serves as a companion amplifier for the Yamaha XDA-QS5400RK to expand speaker coverage and/or increase power output. It may also be used to expand secondary zone speaker coverage for Yamaha AV receivers that have Zone pre outs.



- Works together with Yamaha XDA-QS5400RK to expand speaker coverage in custom integrated multi-room audio systems
- Eight channels of audiophile-grade Class D amplification, bridgeable and 4-ohm capable, featuring a unique ground loop/hum-free circuit design
- Four audio buses and included jumpers allow for wide variety of speaker configurations
- Interlocks power on/off with XDA-QS5400RK via Trigger I/O
- Integration-friendly features include audio sensing inputs, IR I/O and more
- 1U high, rack-wide enclosure; removable rack ears and faceplate included

The Perfect Whole Home Audio Companion



Sonic Soul Mates

The XDA-AMP5400RK – the “AMP” – was conceived as a companion to the Yamaha XDA-QS5400RK as a way to provide additional speaker coverage and/or additional speaker output power in a custom integrated multi-room home audio system. It also pairs nicely with Yamaha AV receivers that offer Zone pre outs.

Slim yet Powerful

The AMP packs eight channels of audiophile-grade amplification into a remarkably-slim 1U-high enclosure, allowing you to fully optimise your valuable rack real estate.



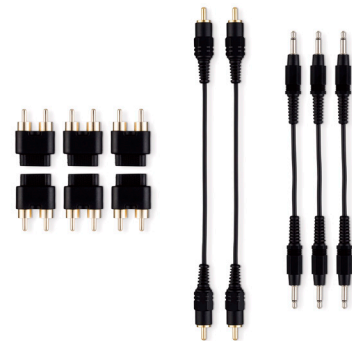
Phenomenal Flexibility

Feed up to four sources from QS pre outs into the AMP – its four audio I/O buses can be patched together to handle a wide array of speaker/zone configurations. The AMP comes with a set of jumper plugs and cables, making it ultra-versatile right out of the box. The audio outs can alternatively be used to connect powered subwoofers or subwoofer amps.

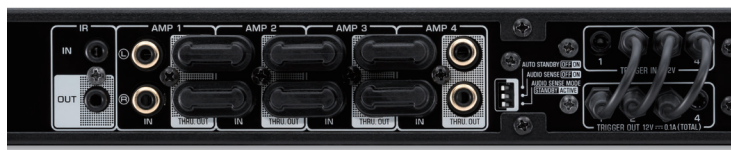
Four Audio I/O Buses



Accessory jumper plugs and cables



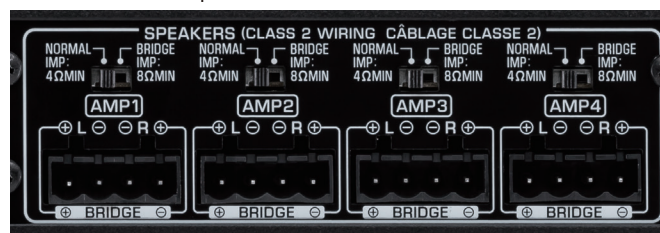
Versatile setups with attached jumper plugs and cables



More Power on Demand

Each of the four amplifier zones is also bridgeable, giving you the option to increase power output to select speakers if needed.

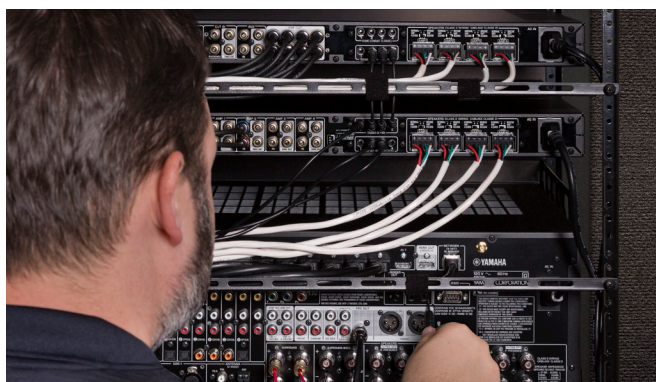
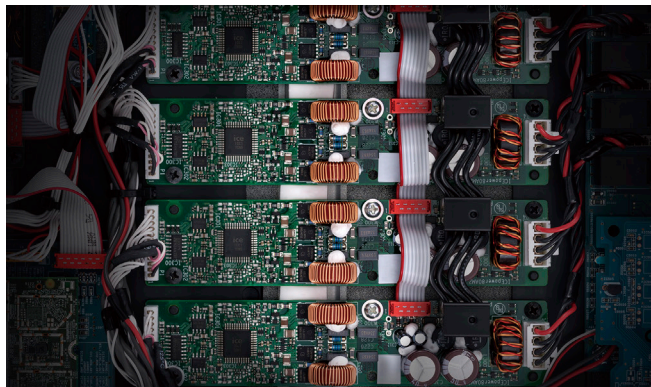
XDA-AMP5400RK rear panel



Engineered to Sound Extraordinary

Audiophile-Grade Amplification

The AMP employs ultra-efficient ICEpower integrated circuits to deliver eight channels of pristine, musically-dynamic digital amplification 50 watts/channel (8 ohms) with an outstanding 5 Hz to 40 kHz (+0/-3 dB) frequency response and 108 dB signal-to-noise ratio. It is 4 ohm capable at 100 watts/channel and bridgeable 200 watts/channel (8 ohms)

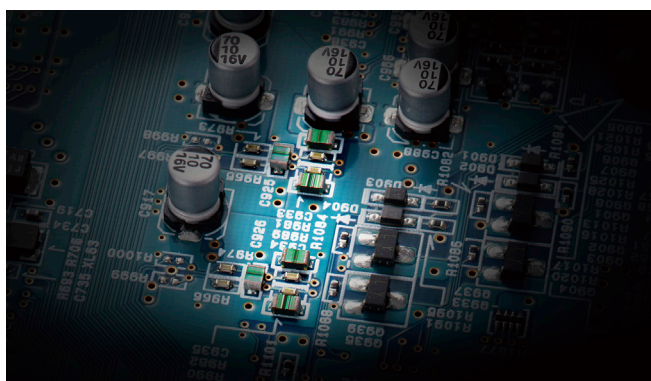


Goodbye Ground Loop Hum

The curse of the custom integrator: ground loop hum, a common and vexing side effect of connecting a bunch of electronics together in a rack. The AMP takes care of it with a brilliantly-engineered differential circuit design. Sometimes it's what you don't hear that sounds the most amazing.

High-Performance under the Hood

The AMP employs a balanced audio circuit design and PML capacitors, which are also used in our flagship AVENTAGE AV separates. The result: greater realism and expressiveness for all of your favourite music.



Custom-Built for Custom

Versatile Installation

Mount it in a rack with the included ears or remove the ears for shelf installations. The included magnetic face plate discourages tampering and provides the perfect cosmetic finish.



XDA-QS5400RK rear panel



XDA-AMP5400RK rear panel



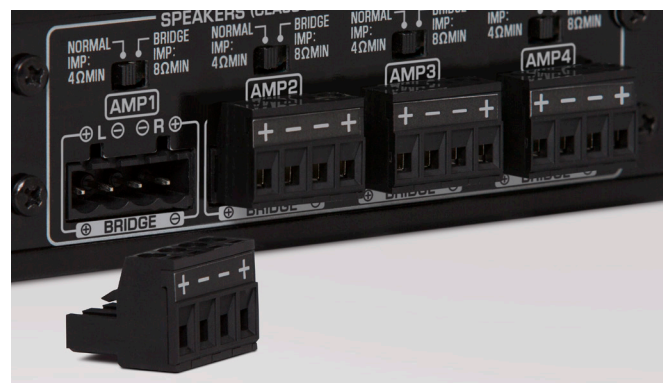
Harmonious Control

When a QS and AMP are used together, simply wire the trigger ports to automatically power on/off the desired amplifier zones – no additional control interface is needed. The AMP also works great as a companion to an AVENTAGE AV receiver. When using the AMP with other sources, audio sensing inputs and an infrared I/O provide additional control flexibility.

Custom-Friendly Connectivity

The AMP is truly made for custom integration, with Euroblock-style speaker connectors and a detachable AC cable for smart connectivity.

XDA-AMP5400RK rear panel



Audio Specifications	Channel	8-channel (2-channel x 4)
	Minimum Speaker load Capability	4 ohm
	BTL Connection	Yes
	Speaker Output Terminal	4 (Euro Block)
	Audio Input Terminal	RCA: 4
	Audio Output Terminal	RCA (2-ch through out): 4
	Trigger In / Out	4 / 4
	Remote In / Out	1 / 1
	Rated Output Power (1 kHz, 0.9% THD, 2ch driven)	Normal (4 / 8 ohms): 90 / 50 W, Bridge (8 ohms): 100 W
	Rated Output Power (1 kHz, 0.9% THD, 1ch driven)	Normal (4 / 8 ohms): 100 / 50 W, Bridge (8 ohms):200 W
	Dynamic Power (20 Hz-20 kHz, 0.08% THD, 2ch driven, 20 ms burst)	Normal (4 / 8 ohms): 80 / 40 W, Bridge (8 ohms): 150 W
	Dynamic Power (1 kHz, 0.9% THD, 2ch driven, 20 ms burst)	Normal (4 / 8 ohms): 100 / 50 W, Bridge (8 ohms): 200 W
	Dynamic Power (1 kHz, 0.9% THD, All ch driven, 20 ms burst)	Normal (4 / 8 ohms): 80 / 50 W, Bridge (8 ohms):170 W
	Maximum Effective Output Power	[1-ch driven, 1 kHz, 10% THD] Normal (4 / 8 ohm):130 / 65 W, Bridge (8 ohm): 260 W
	Total Harmonic Distortion	[SP OUT, 20 Hz-20 kHz, 25 W, 8 ohm] 0.04%
	Frequency Response	[1 kHz + 0 / -3 dB] SP OUT AUX IN: 5 Hz-40 kHz
	Channel Separation	[SP OUT, 1 kHz / 10 kHz] 78 dB / 62 dB
	Signal to Noise Ratio	[SP OUT AUX IN] 108 dB
	Maximum Input Signal	[PRE OUT L / R, 0.9% THD] 1 V
		[SP OUT 1 V Input] 25.8 dB
Input Sensitivity	[1 W Power, 8 ohm] 150 mV, [MAX (50W) Power, 8 ohm] 1.0 V	
General	Power Consumption	TBD
	Standby Power Consumption	TBD
	Maximum Power Consumption	TBD
	Power Management (Auto Power Standby)	Yes (On / Off)
	Dimension (W x H x D) mm	436.8 x 43.8 x 438.2 mm; 17-1/4" x 1-3/4" x 17-1/4", [with faceplate] 436.8 x 43.8 x 448.2 mm; 17-1/4" x 1-3/4" x 17-5/8", [with rack ears] 481 x 43.8 x 438.2 mm; 18-7/8" x 1-3/4" x 17-1/4", [with cushion] 436.8 x 44.9 x 438.2 mm; 17-1/4" x 1-3/4" x 17-1/4"
		6.02 kg; 13.3 lbs.